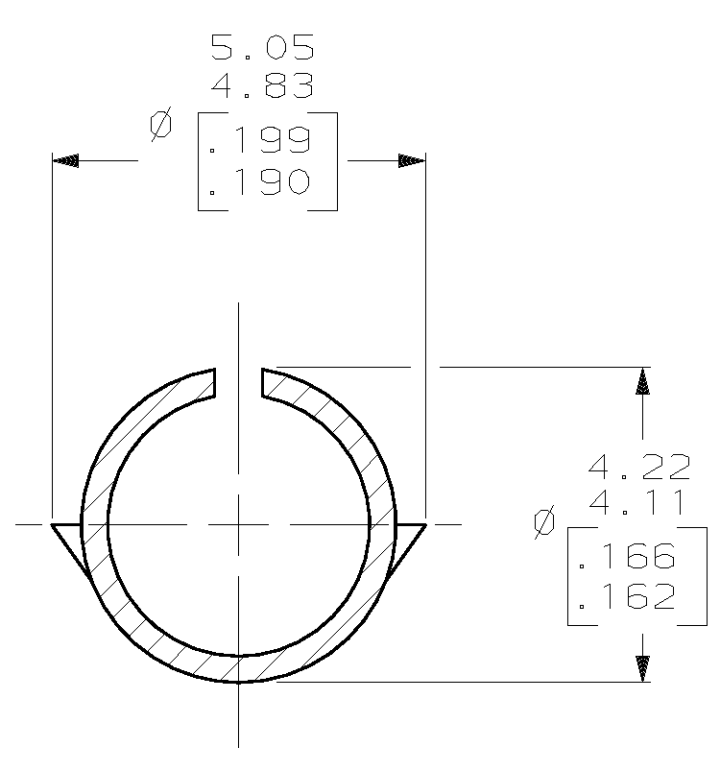
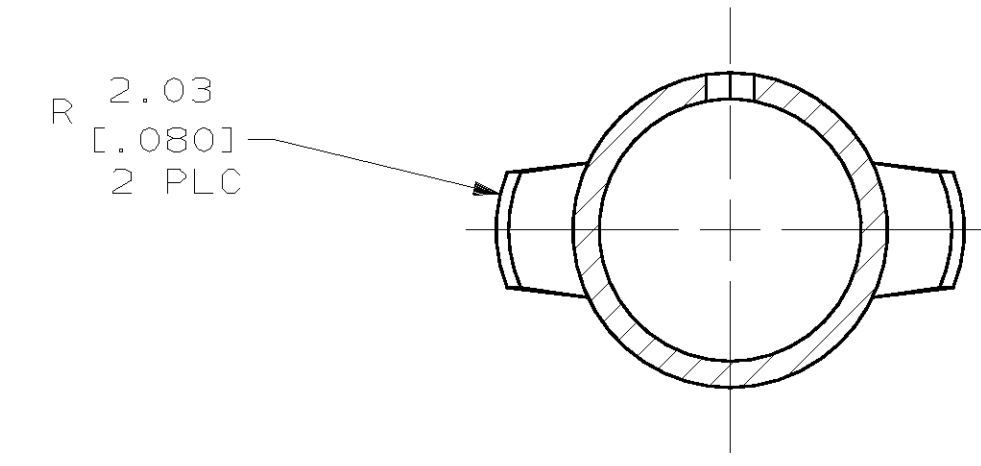
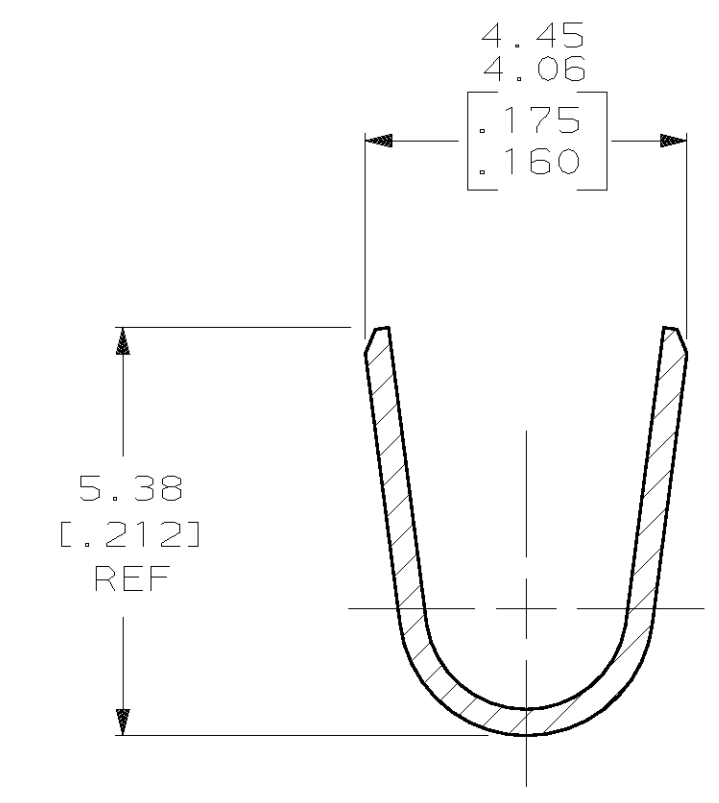
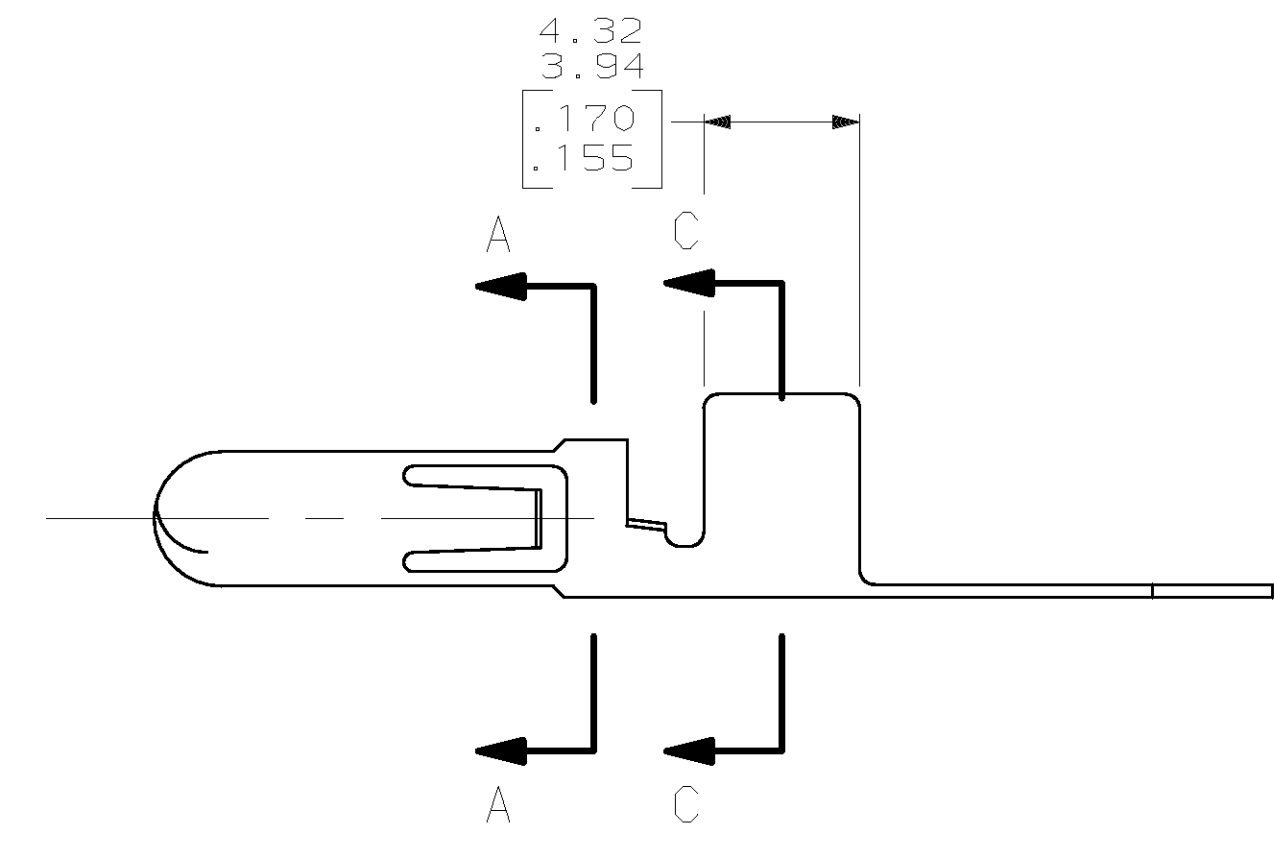
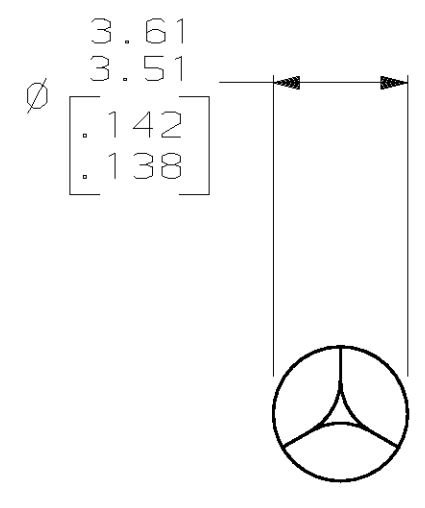
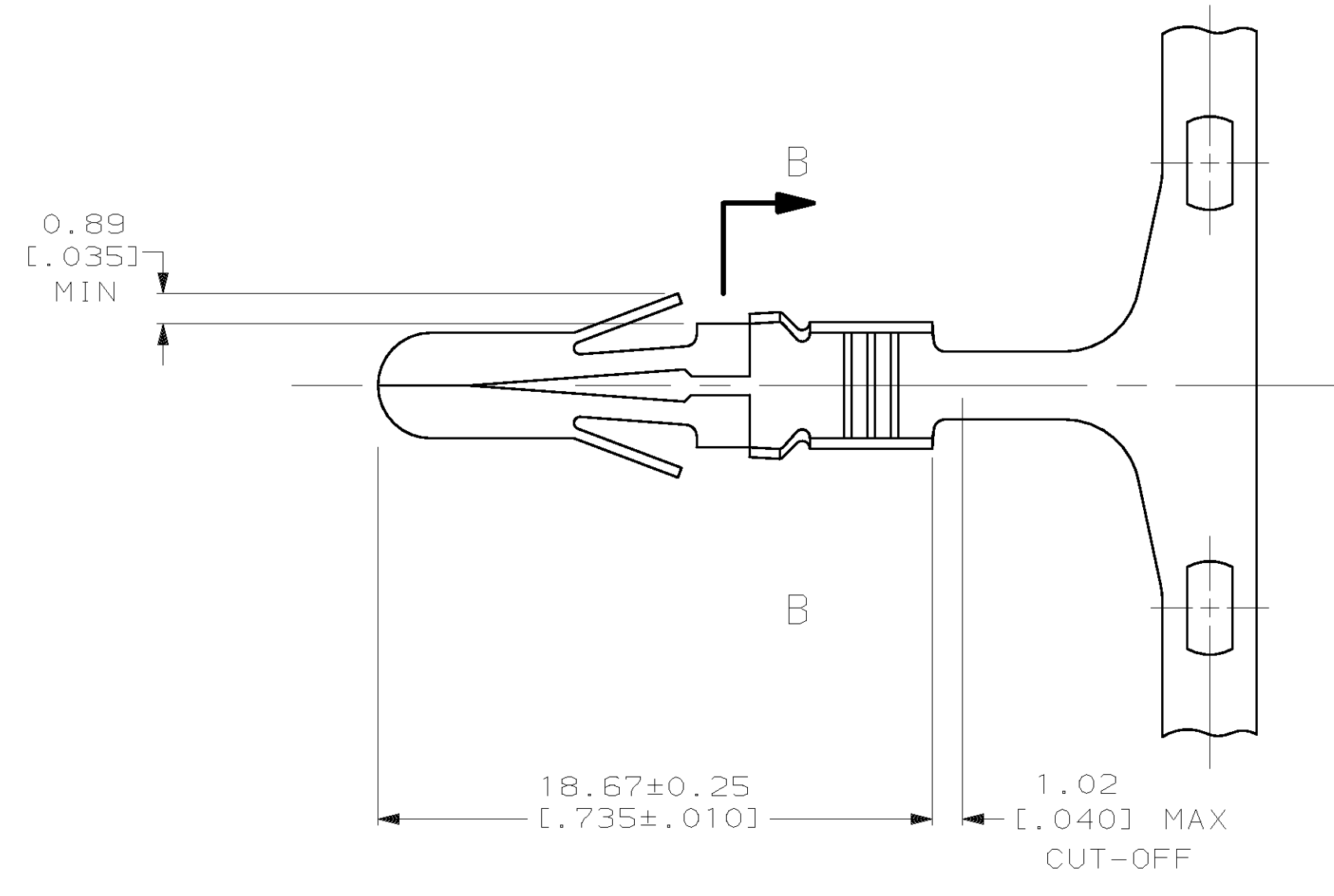


| LOC | | DIST | | P | | F | | ZONE | | LTR | | REVISIONS | | DATE | APPD | |
|-----|----|------|--|---|--|---|--|------|--|-----|--|-----------|---|-------------------------|--------|----------|
| CM | 53 | | | | | | | | | | | | D | REV PER EC 061B-0102-98 | 6-2-98 | JH RS |

1. WIRE RANGE: 2 - 6 mm² [14-10] AWG.
2. TO BE USED IN HOUSING P/N 770464-1 ONLY.
3. DIMENSIONS IN BRACKETS ARE IN INCHES.



SECTION A-A
SCALE 10:1

SECTION B-B
ROTATED 90° CCW
SCALE 10:1

SECTION C-C
SCALE 10:1

METRIC

| | | | | | |
|--|--|-------------------------|--|---|--|
| DO NOT SCALE PRINT. UNLESS SPECIFIED DIMENSIONS IN MM [INCHES] | | DR K. WHITAKER 12-20-88 | | AMP INCORPORATED Harrisburg, Pa. 17105 | |
| TOLERANCES ON: | | CHK R. SWING 12-21-88 | | | |
| 2 PLC DEC ± 0.13 [.005] | | APPD G. BROWN 12-21-88 | | NAME | |
| 3 PLC DEC ± _____ | | APPD G. BROWN 12-21-88 | | PIN, .140 MATE-N-LOK™ | |
| ANGLES ± _____ | | PRODUCT SPEC | | MATERIAL | |
| 0.36 [.014] BRASS | | APPLICATION SPEC | | SIZE | |
| FINISH PRE-TIN | | WEIGHT | | D 00779 | |
| | | | | SCALE 5:1 | |
| | | | | DRAWING NO 770484 | |
| | | | | SHEET 1 OF 1 | |

770484-1
PART NO